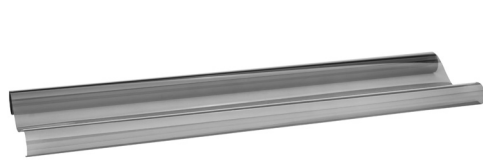


## /// PARKSIDE



### SUN PROTECTION WINDOW FILM/UV PROTECTION WINDOW FILM

**SUN PROTECTION WINDOW FILM/UV PROTECTION WINDOW FILM** Assembly and safety instructions

**FOLIA ZA ZAŠTITU OD SUNCA ZA PROZORE/UV ZAŠTITNA FOLIJA OD SUNCA** Uputstvo za montažu i sigurnost

**FOLIA ZA ZAŠTITU OD SUNCA ZA PROZORE/UV ZAŠTITNA FOLIJA OD SUNCA** Uputstvo o montaži i bezbednosti

**FOLIE DE PROTECTIE SOLARĂ PENTRU FERESTRE/FOLIE PENTRU PROTECTIA SOLARĂ UV** Instrucții de montaj- și siguranță

**СЛЪНЦЕЗАШТИТНО ФОЛИО ЗА ПРОЗОРЦИ/UV СЛЪНЦЕЗАШТИТНО ФОЛИО** Инструкции за монтаж и безопасност

**MEMBRANŢI HΛIOΠΡΟΣΤΑΣΙΑΣ ΠΑΡΑΥΡΟΥ/ MEMBRANŢI ANTHΛIAKHΣ ΠΡΟΣΤΑΣΙΑΣ** Instrucții de montaj și siguranță

**SONNENSCHUTZ-FENSTERFOLIE/UV-SONNENSCHUTZFOLIE** Montage- und Sicherheitshinweise

**СЛЪНЦЕЗАШТИТНО ФОЛИО ЗА ПРОЗОРЦИ/UV СЛЪНЦЕЗАШТИТНО ФОЛИО** Инструкции за монтаж и безопасност

**MEMBRANŢI HΛIOΠΡΟΣΤΑΣΙΑΣ ΠΑΡΑΥΡΟΥ/ MEMBRANŢI ANTHΛIAKHΣ ΠΡΟΣΤΑΣΙΑΣ** Instrucții de montaj și siguranță

**СЛЪНЦЕЗАШТИТНО ФОЛИО ЗА ПРОЗОРЦИ/UV СЛЪНЦЕЗАШТИТНО ФОЛИО** Инструкции за монтаж и безопасност

**MEMBRANŢI HΛIOΠΡΟΣΤΑΣΙΑΣ ΠΑΡΑΥΡΟΥ/ MEMBRANŢI ANTHΛIAKHΣ ΠΡΟΣΤΑΣΙΑΣ** Instrucții de montaj și siguranță

**СЛЪНЦЕЗАШТИТНО ФОЛИО ЗА ПРОЗОРЦИ/UV СЛЪНЦЕЗАШТИТНО ФОЛИО** Инструкции за монтаж и безопасност

**MEMBRANŢI HΛIOΠΡΟΣΤΑΣΙΑΣ ΠΑΡΑΥΡΟΥ/ MEMBRANŢI ANTHΛIAKHΣ ΠΡΟΣΤΑΣΙΑΣ** Instrucții de montaj și siguranță

**СЛЪНЦЕЗАШТИТНО ФОЛИО ЗА ПРОЗОРЦИ/UV СЛЪНЦЕЗАШТИТНО ФОЛИО** Инструкции за монтаж и безопасност

**MEMBRANŢI HΛIOΠΡΟΣΤΑΣΙΑΣ ΠΑΡΑΥΡΟΥ/ MEMBRANŢI ANTHΛIAKHΣ ΠΡΟΣΤΑΣΙΑΣ** Instrucții de montaj și siguranță

**СЛЪНЦЕЗАШТИТНО ФОЛИО ЗА ПРОЗОРЦИ/UV СЛЪНЦЕЗАШТИТНО ФОЛИО** Инструкции за монтаж и безопасност

**MEMBRANŢI HΛIOΠΡΟΣΤΑΣΙΑΣ ΠΑΡΑΥΡΟΥ/ MEMBRANŢI ANTHΛIAKHΣ ΠΡΟΣΤΑΣΙΑΣ** Instrucții de montaj și siguranță

**СЛЪНЦЕЗАШТИТНО ФОЛИО ЗА ПРОЗОРЦИ/UV СЛЪНЦЕЗАШТИТНО ФОЛИО** Инструкции за монтаж и безопасност

**MEMBRANŢI HΛIOΠΡΟΣΤΑΣΙΑΣ ΠΑΡΑΥΡΟΥ/ MEMBRANŢI ANTHΛIAKHΣ ΠΡΟΣΤΑΣΙΑΣ** Instrucții de montaj și siguranță

**СЛЪНЦЕЗАШТИТНО ФОЛИО ЗА ПРОЗОРЦИ/UV СЛЪНЦЕЗАШТИТНО ФОЛИО** Инструкции за монтаж и безопасност

**MEMBRANŢI HΛIOΠΡΟΣΤΑΣΙΑΣ ΠΑΡΑΥΡΟΥ/ MEMBRANŢI ANTHΛIAKHΣ ΠΡΟΣΤΑΣΙΑΣ** Instrucții de montaj și siguranță

**СЛЪНЦЕЗАШТИТНО ФОЛИО ЗА ПРОЗОРЦИ/UV СЛЪНЦЕЗАШТИТНО ФОЛИО** Инструкции за монтаж и безопасност

**MEMBRANŢI HΛIOΠΡΟΣΤΑΣΙΑΣ ΠΑΡΑΥΡΟΥ/ MEMBRANŢI ANTHΛIAKHΣ ΠΡΟΣΤΑΣΙΑΣ** Instrucții de montaj și siguranță

**СЛЪНЦЕЗАШТИТНО ФОЛИО ЗА ПРОЗОРЦИ/UV СЛЪНЦЕЗАШТИТНО ФОЛИО** Инструкции за монтаж и безопасност

**MEMBRANŢI HΛIOΠΡΟΣΤΑΣΙΑΣ ΠΑΡΑΥΡΟΥ/ MEMBRANŢI ANTHΛIAKHΣ ΠΡΟΣΤΑΣΙΑΣ** Instrucții de montaj și siguranță

**СЛЪНЦЕЗАШТИТНО ФОЛИО ЗА ПРОЗОРЦИ/UV СЛЪНЦЕЗАШТИТНО ФОЛИО** Инструкции за монтаж и безопасност

**MEMBRANŢI HΛIOΠΡΟΣΤΑΣΙΑΣ ΠΑΡΑΥΡΟΥ/ MEMBRANŢI ANTHΛIAKHΣ ΠΡΟΣΤΑΣΙΑΣ** Instrucții de montaj și siguranță

**СЛЪНЦЕЗАШТИТНО ФОЛИО ЗА ПРОЗОРЦИ/UV СЛЪНЦЕЗАШТИТНО ФОЛИО** Инструкции за монтаж и безопасност

**MEMBRANŢI HΛIOΠΡΟΣΤΑΣΙΑΣ ΠΑΡΑΥΡΟΥ/ MEMBRANŢI ANTHΛIAKHΣ ΠΡΟΣΤΑΣΙΑΣ** Instrucții de montaj și siguranță

**СЛЪНЦЕЗАШТИТНО ФОЛИО ЗА ПРОЗОРЦИ/UV СЛЪНЦЕЗАШТИТНО ФОЛИО** Инструкции за монтаж и безопасност

**MEMBRANŢI HΛIOΠΡΟΣΤΑΣΙΑΣ ΠΑΡΑΥΡΟΥ/ MEMBRANŢI ANTHΛIAKHΣ ΠΡΟΣΤΑΣΙΑΣ** Instrucții de montaj și siguranță

**СЛЪНЦЕЗАШТИТНО ФОЛИО ЗА ПРОЗОРЦИ/UV СЛЪНЦЕЗАШТИТНО ФОЛИО** Инструкции за монтаж и безопасност

**MEMBRANŢI HΛIOΠΡΟΣΤΑΣΙΑΣ ΠΑΡΑΥΡΟΥ/ MEMBRANŢI ANTHΛIAKHΣ ΠΡΟΣΤΑΣΙΑΣ** Instrucții de montaj și siguranță

**СЛЪНЦЕЗАШТИТНО ФОЛИО ЗА ПРОЗОРЦИ/UV СЛЪНЦЕЗАШТИТНО ФОЛИО** Инструкции за монтаж и безопасност

**MEMBRANŢI HΛIOΠΡΟΣΤΑΣΙΑΣ ΠΑΡΑΥΡΟΥ/ MEMBRANŢI ANTHΛIAKHΣ ΠΡΟΣΤΑΣΙΑΣ** Instrucții de montaj și siguranță

**СЛЪНЦЕЗАШТИТНО ФОЛИО ЗА ПРОЗОРЦИ/UV СЛЪНЦЕЗАШТИТНО ФОЛИО** Инструкции за монтаж и безопасност

**MEMBRANŢI HΛIOΠΡΟΣΤΑΣΙΑΣ ΠΑΡΑΥΡΟΥ/ MEMBRANŢI ANTHΛIAKHΣ ΠΡΟΣΤΑΣΙΑΣ** Instrucții de montaj și siguranță

**СЛЪНЦЕЗАШТИТНО ФОЛИО ЗА ПРОЗОРЦИ/UV СЛЪНЦЕЗАШТИТНО ФОЛИО** Инструкции за монтаж и безопасност

**MEMBRANŢI HΛIOΠΡΟΣΤΑΣΙΑΣ ΠΑΡΑΥΡΟΥ/ MEMBRANŢI ANTHΛIAKHΣ ΠΡΟΣΤΑΣΙΑΣ** Instrucții de montaj și siguranță

**СЛЪНЦЕЗАШТИТНО ФОЛИО ЗА ПРОЗОРЦИ/UV СЛЪНЦЕЗАШТИТНО ФОЛИО** Инструкции за монтаж и безопасност

**MEMBRANŢI HΛIOΠΡΟΣΤΑΣΙΑΣ ΠΑΡΑΥΡΟΥ/ MEMBRANŢI ANTHΛIAKHΣ ΠΡΟΣΤΑΣΙΑΣ** Instrucții de montaj și siguranță

**СЛЪНЦЕЗАШТИТНО ФОЛИО ЗА ПРОЗОРЦИ/UV СЛЪНЦЕЗАШТИТНО ФОЛИО** Инструкции за монтаж и безопасност

**MEMBRANŢI HΛIOΠΡΟΣΤΑΣΙΑΣ ΠΑΡΑΥΡΟΥ/ MEMBRANŢI ANTHΛIAKHΣ ΠΡΟΣΤΑΣΙΑΣ** Instrucții de montaj și siguranță

**СЛЪНЦЕЗАШТИТНО ФОЛИО ЗА ПРОЗОРЦИ/UV СЛЪНЦЕЗАШТИТНО ФОЛИО** Инструкции за монтаж и безопасност

**MEMBRANŢI HΛIOΠΡΟΣΤΑΣΙΑΣ ΠΑΡΑΥΡΟΥ/ MEMBRANŢI ANTHΛIAKHΣ ΠΡΟΣΤΑΣΙΑΣ** Instrucții de montaj și siguranță

**СЛЪНЦЕЗАШТИТНО ФОЛИО ЗА ПРОЗОРЦИ/UV СЛЪНЦЕЗАШТИТНО ФОЛИО** Инструкции за монтаж и безопасност

**MEMBRANŢI HΛIOΠΡΟΣΤΑΣΙΑΣ ΠΑΡΑΥΡΟΥ/ MEMBRANŢI ANTHΛIAKHΣ ΠΡΟΣΤΑΣΙΑΣ** Instrucții de montaj și siguranță

**СЛЪНЦЕЗАШТИТНО ФОЛИО ЗА ПРОЗОРЦИ/UV СЛЪНЦЕЗАШТИТНО ФОЛИО** Инструкции за монтаж и безопасност

**MEMBRANŢI HΛIOΠΡΟΣΤΑΣΙΑΣ ΠΑΡΑΥΡΟΥ/ MEMBRANŢI ANTHΛIAKHΣ ΠΡΟΣΤΑΣΙΑΣ** Instrucții de montaj și siguranță

**СЛЪНЦЕЗАШТИТНО ФОЛИО ЗА ПРОЗОРЦИ/UV СЛЪНЦЕЗАШТИТНО ФОЛИО** Инструкции за монтаж и безопасност

**MEMBRANŢI HΛIOΠΡΟΣΤΑΣΙΑΣ ΠΑΡΑΥΡΟΥ/ MEMBRANŢI ANTHΛIAKHΣ ΠΡΟΣΤΑΣΙΑΣ** Instrucții de montaj și siguranță

**СЛЪНЦЕЗАШТИТНО ФОЛИО ЗА ПРОЗОРЦИ/UV СЛЪНЦЕЗАШТИТНО ФОЛИО** Инструкции за монтаж и безопасност

**MEMBRANŢI HΛIOΠΡΟΣΤΑΣΙΑΣ ΠΑΡΑΥΡΟΥ/ MEMBRANŢI ANTHΛIAKHΣ ΠΡΟΣΤΑΣΙΑΣ** Instrucții de montaj și siguranță

**СЛЪНЦЕЗАШТИТНО ФОЛИО ЗА ПРОЗОРЦИ/UV СЛЪНЦЕЗАШТИТНО ФОЛИО** Инструкции за монтаж и безопасност

**MEMBRANŢI HΛIOΠΡΟΣΤΑΣΙΑΣ ΠΑΡΑΥΡΟΥ/ MEMBRANŢI ANTHΛIAKHΣ ΠΡΟΣΤΑΣΙΑΣ** Instrucții de montaj și siguranță

**СЛЪНЦЕЗАШТИТНО ФОЛИО ЗА ПРОЗОРЦИ/UV СЛЪНЦЕЗАШТИТНО ФОЛИО** Инструкции за монтаж и безопасност

**MEMBRANŢI HΛIOΠΡΟΣΤΑΣΙΑΣ ΠΑΡΑΥΡΟΥ/ MEMBRANŢI ANTHΛIAKHΣ ΠΡΟΣΤΑΣΙΑΣ** Instrucții de montaj și siguranță

**IMPORTANT, RETAIN FOR FUTURE REFERENCE: READ CAREFULLY!**

**ВАЖНО, ПОХРАНИТИ ЗА КАСНИЈЕ ПОНОВНО КРИСТЕЊЕ: ПАЗЉИВО ЧИТАЈТЕ!**

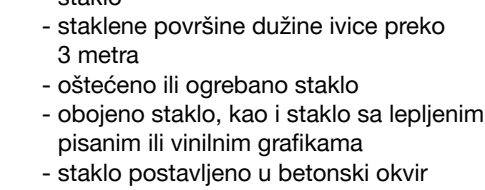
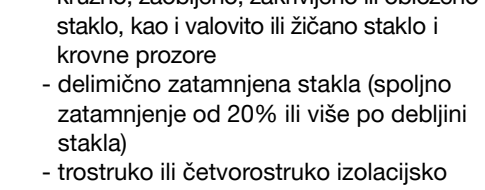
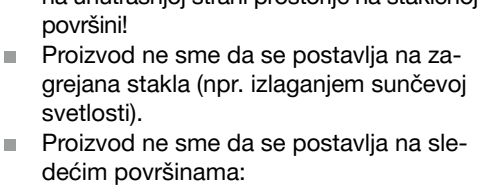
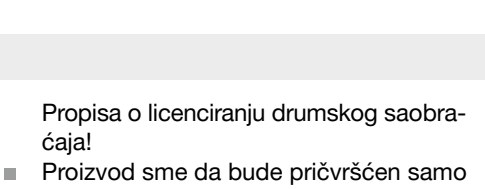
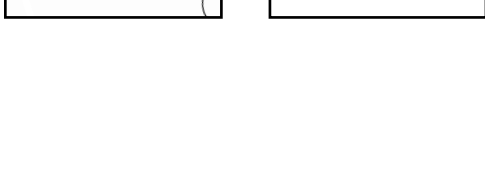
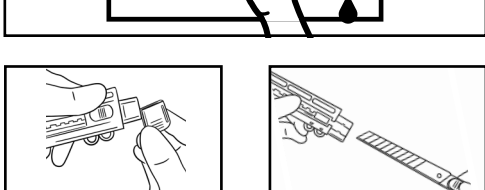
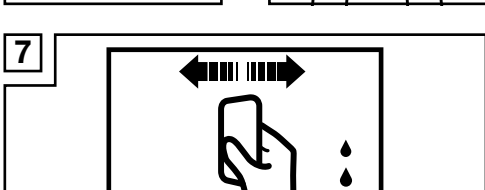
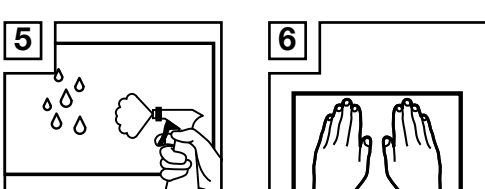
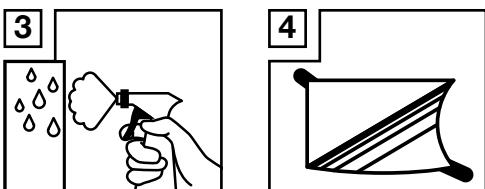
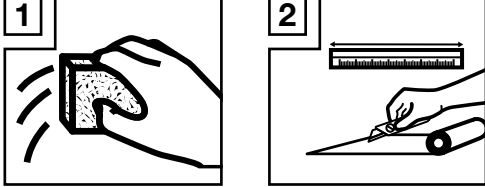
**ВАЖНО, СΑΦΥΒΑΤΗ ΖΑ ΚΑΣΝΙЈЕ REFERENCE: ΠΑΖЉΙΒΟ ΡROCΪΤΑΤΙ!**

**IMPORTANT, PĂSTRATI PENTRU CONSULTAREA ULTERIOARĂ: CITIȚI CU ATENȚIE!**

**ВАЖНО, ЗАПАЗЕТЕ ЗА БЪДЕЩИ СПРАВКИ: ПРОЧЕТЕТЕ ВНИМАТЕЛНО!**

**ΣΗΜΑΝΤΙΚΟ, ΦΥΛΑΞΤΕ ΓΙΑ ΜΕΛΛΟΝΤΗ ΑΝΑΦΟΡΑ: ΔΙΑΒΑΣΤΕ ΠΡΟΣΕΚΤΙΚΑ!**

**WICHTIG, FÜR SPÄTERE BEZUGNAHME AUF-BEWAHREN: SORGFÄLTIG LESEN!**



**PAŽNJA! Rizik od loma zbog toplote!**

**Rizik od loma usled dejstva toplote!**

**Spătalia za foliiu (ključuena u obim isporuke)**

**Lepjivja traka za otpuštanje zaštitnog sloja**

**Flaciša sa rasprskivačem sa rastvorom vode i deterđženta (cca 1 l destilovane vode i cca 8 kapi deterđženta)**

**Lenjir**

**1. Temeljno očistite stakla koju se lepe - iznutra i spolja (vidi sl. 1).**

**2. Izmerite veličinu površine koju se lepi i pažljivo isecite foliju na veličinu (vidi sl. 2).**

**Uverite se da se oblik uklapa.**

**3. Temeljno posprežite staklo rastvorom vode i deterđženta (vidi sl. 3). Staklo ne sme da se osuši tokom obrade.**

**4. Nalepite lepljivu traku na prednju i zadnju stranu folije. Na ovaj način možete lako i čisto da skinete noseću foliju sa zatamnjene folije (vidi sl. 4).**

**5. Sada navlažite lepljivi sloj zatamnjene folije rastvorom vode i deterđženta (vidi sl. 5).**

**6. Postavite ovu vlačnu lepljivu stranu folije na vlačnu unutrašnjost stakla i pomerite foliju u željeni položaj (vidi sl. 6).**

**7. Koristite špatlu za foliju da biste ostete istisnuli ispod folije vodene, dok između stakla i folije više nema mehurića (vidi sl. 7).**

**List of products used**

**Safety information**

**Instructions for use**

**Sun Protection Window Film/UV Protection Window Film**

#### ● Introduction

We congratulate you on the purchase of your new product. You have chosen a high quality product. Familiarise yourself with the product before using it for the first time. In addition, please carefully refer to the operating instructions and the safety advice below. Only use the product as instructed and only for the indicated field of application. Keep these instructions in a safe place. If you pass the product on to anyone else, please ensure that you also pass on all the documentation with it.

#### ● Intended use

This product is only intended for private household use, not for commercial use.

#### ● Scope of delivery

1 adhesive film 1 cutter (approx. 75 x 220 cm) 1 squeegee 1 assembly instruction

#### ⚠ Safety information

PLEASE KEEP ALL SAFETY INSTRUCTIONS AND INSTRUCTIONS FOR USE FOR FUTURE REFERENCE!

#### ⚠ Attention!

Please bear in mind that heat and cold sources can cause abrupt temperature fluctuations at local areas of glazing and so aggravate any thermal loads on the materials.

**Note:** Glass breakage is not covered by the warranty! The warranty and all warranty claims are restricted to the replacement of the product and do not extend to glass breakage. The warranty and all warranty claims become null and void when the product is used in any of the cases named under "Safety information".
**Warning:** Risk of injuries - sharp blade. Wear protective gloves and goggles. Keep out of the reach of children.

**⚠ CAUTION!** This product may not be used in motor vehicles! The product is not approved under the road traffic registration regulations!
**■ The product may be attached to the inside of the glazing only!**

The product may not be attached to heated glazing (e.g. glazing exposed to direct sunlight).

**■ The product may not be used on the following base surfaces:**

- circular, rounded, curved, coated, ribbed, or wired glazing or skylights
- partially tinted glazing (outside tint of 20% or more per pane)
- triple or quadruple insulation glazing - panes exceeding a side length of three metres
- damaged or scratched glazing
- stained glass or glazing with adhesive lettering or vinyl motifs
- glass framed in concrete
- broken panes or insulating glazing with damaged gaskets

#### ⚠ ATTENTION! Risk of heat-induced breakage!

In general, there is a very small risk of heat-induced breakage on glass and glazing, but it cannot be ruled out completely. If this risk is to be minimised the product must be attached in accordance with the operating instructions and the following information:

- The edges of the pane must be smooth.

- The risk of breakage grows with the size of the pane.

**Radiators and air conditioners** Please bear in mind that heat and cold sources can cause abrupt temperature fluctuations at local areas of glazing and so aggravate any thermal loads on the materials.

#### ⚠ ATTENTION! Prevent the build-up of heat by installing additional internal shade systems.

The most common forms of internal shading are e.g. Venetian blinds, net curtains, roller shutters, screens, partitions attached to the inside of the glazing (over part or all of the glazed facade), stained glass, adhesive lettering, transfers, etc. Please avoid shading on the glazing cast by structural or natural elements because these can give rise to local temperature drops.

#### ⚠ ATTENTION! Prevent the build-up of heat by installing additional internal shade systems.

The most common forms of external shading are roof overhangs, neighbouring buildings, brise-soleils, external roller shutters, external Venetian blinds, pillars, columns, and natural elements (e.g. trees).

#### ⚠ ATTENTION! Prevent the build-up of heat by installing additional internal shade systems.

The most common forms of external shading are roof overhangs, neighbouring buildings, brise-soleils, external roller shutters, external Venetian blinds, pillars, columns, and natural elements (e.g. trees).

#### ⚠ ATTENTION! Prevent the build-up of heat by installing additional internal shade systems.

The most common forms of external shading are roof overhangs, neighbouring buildings, brise-soleils, external roller shutters, external Venetian blinds, pillars, columns, and natural elements (e.g. trees).

#### ⚠ ATTENTION! Prevent the build-up of heat by installing additional internal shade systems.

The most common forms of external shading are roof overhangs, neighbouring buildings, brise-soleils, external roller shutters, external Venetian blinds, pillars, columns, and natural elements (e.g. trees).

#### ⚠ ATTENTION! Prevent the build-up of heat by installing additional internal shade systems.

The most common forms of external shading are roof overhangs, neighbouring buildings, brise-soleils, external roller shutters, external Venetian blinds, pillars, columns, and natural elements (e.g. trees).

#### ⚠ ATTENTION! Prevent the build-up of heat by installing additional internal shade systems.

The most common forms of external shading are roof overhangs, neighbouring buildings, brise-soleils, external roller shutters, external Venetian blinds, pillars, columns, and natural elements (e.g. trees).

#### ⚠ ATTENTION! Prevent the build-up of heat by installing additional internal shade systems.

The most common forms of external shading are roof overhangs, neighbouring buildings, brise-soleils, external roller shutters, external Venetian blinds, pillars, columns, and natural elements (e.g. trees).

#### ⚠ ATTENTION! Prevent the build-up of heat by installing additional internal shade systems.

The most common forms of external shading are roof overhangs, neighbouring buildings, brise-soleils, external roller shutters, external Venetian blinds, pillars, columns, and natural elements (e.g. trees).

#### ⚠ ATTENTION! Prevent the build-up of heat by installing additional internal shade systems.

The most common forms of external shading are roof overhangs, neighbouring buildings, brise-soleils, external roller shutters, external Venetian blinds, pillars, columns, and natural elements (e.g. trees).

#### ⚠ ATTENTION! Prevent the build-up of heat by installing additional internal shade systems.

The most common forms of external shading are roof overhangs, neighbouring buildings, brise-soleils, external roller shutters, external Venetian blinds, pillars, columns, and natural elements (e.g. trees).

#### ⚠ ATTENTION! Prevent the build-up of heat by installing additional internal shade systems.

The most common forms of external shading are roof overhangs, neighbouring buildings, brise-soleils, external roller shutters, external Venetian blinds, pillars, columns, and natural elements (e.g. trees).

#### ⚠ ATTENTION! Prevent the build-up of heat by installing additional internal shade systems.

The most common forms of external shading are roof overhangs, neighbouring buildings, brise-soleils, external roller shutters, external Venetian blinds, pillars, columns, and natural elements (e.g. trees).

#### ⚠ ATTENTION! Prevent the build-up of heat by installing additional internal shade systems.

The most common forms of external shading are roof overhangs, neighbouring buildings, brise-soleils, external roller shutters, external Venetian blinds, pillars, columns, and natural elements (e.g. trees).

#### ⚠ ATTENTION! Prevent the build-up of heat by installing additional internal shade systems.

The most common forms of external shading are roof overhangs, neighbouring buildings, brise-soleils, external roller shutters, external Venetian blinds, pillars, columns, and natural elements (e.g. trees).

#### ⚠ ATTENTION! Prevent the build-up of heat by installing additional internal shade systems.

The most common forms of external shading are roof overhangs, neighbouring buildings, brise-soleils, external roller shutters, external Venetian blinds, pillars, columns, and natural elements (e.g. trees).

#### ⚠ ATTENTION! Prevent the build-up of heat by installing additional internal shade systems.

The most common forms of external shading are roof over

